

3/2-way valve

direct actuated

orifice

DN 10 - 80

pressure range

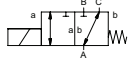
PN 0 - 40 bar

ports

threaded / flanged

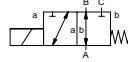
function NC

valve normally closed



function NO

valve normally open



## specifications

design	pressure balanced, with spring return, switching overlap
function	DR NC - normally closed (A ⇒ B)
	DR NO - normally open (A ⇒ B)
body materials	aluminium, brass, galvanized steel, nickel plated brass, nickel plated steel, without non-ferrous metals, stainless steel
seal materials	NBR, PTFE, FPM, CR, EPDM, special materials
media	gaseous, liquid, highly viscous, contaminated
actuation	DC direct-current magnet
	AC direct-current magnet, with integrated / separate rectifier
nominal voltage	DC 24 V / AC 230 V
electrical connection	plug acc. DIN EN 175301-803, form A, LED
insulation class	H - 180 °C
enclosure protection	IP 65
energized duty rating	ED 100 %
flow direction	A ⇒ B / A ⇒ C
	B ⇒ A (Δp 16 bar max.)
vacuum	leak rate < 10 <sup>-6</sup> mbar•l•s <sup>-1</sup>
options / accessories	special threads, special flanges, function NO, damping, limit switches, manual override, approvals, mounting,
	special voltage, connector M12x1, terminal box, ATEX zone 2 cat. 3 max 80°C



coaxial

## technical data

co-ax type	orifice [mm]	ports threaded	ports flanged	pressure range [bar]	Kv value A ⇒ B	media temperature	ambient temperature	switching time [ms] opening / closing
MK 10 DR	DN 10	G 1/4 - G 3/4	-	0 - 16 / 25 / 40	2,6 m³/h	-20 °C ... +120 °C	-10 °C ... +80 °C	40 / 25
MK / FK 15 DR	DN 15	G 3/8 - G 3/4	PN 16 / 40	0 - 16 / 40	4,3 m³/h	-20 °C ... +160 °C	-20 °C ... +80 °C	80 / 80
MK / FK 20 DR	DN 20	G 3/4 - G 1 1/4	PN 16 / 40	0 - 16 / 40	6,7 m³/h	-20 °C ... +160 °C	-20 °C ... +80 °C	110 / 110
MK / FK 25 DR	DN 25	G 1 - G 1 1/2	PN 16 / 40	0 - 16 / 40	11,2 m³/h	-20 °C ... +160 °C	-20 °C ... +80 °C	130 / 130
MK / FK 32 DR	DN 32	G 1 1/4 - G 1 1/2	PN 16 / 40	0 - 16 / 40	14,1 m³/h	-20 °C ... +160 °C	-20 °C ... +80 °C	440 / 250
MK / FK 40 DR	DN 40	G 1 1/2 - G 2	PN 16	0 - 16	18,4 m³/h	-20 °C ... +160 °C	-20 °C ... +80 °C	520 / 150
MK / FK 50 DR	DN 50	G 2	PN 16	0 - 16	28,2 m³/h	-20 °C ... +120 °C	-20 °C ... +80 °C	400 / 400
FK 65 DR	DN 65	-	PN 16	0 - 16	40,0 m³/h	-20 °C ... +80 °C	-20 °C ... +80 °C	600 / 800
FK 80 DR	DN 80	-	PN 16	0 - 16	55,0 m³/h	-20 °C ... +80 °C	-20 °C ... +80 °C	600 / 800

## length

co-ax type	ports	standard	1 limit switch inductive	2 limit switches inductive	1 limit switch mechanical	manual override
MK 10 DR	thread	166,5 mm	-	-	-	-
MK / FK 15 DR	thread / flange	209 mm / 265 mm	249 mm / 305 mm	249 mm / 305 mm	249 mm / 305 mm	249 mm / 305 mm
MK / FK 20 DR	thread / flange	247 mm / 301 mm	291 mm / 345 mm	291 mm / 345 mm	291 mm / 345 mm	291 mm / 345 mm
MK / FK 25 DR	thread / flange	281 mm / 337 mm	322 mm / 378 mm	322 mm / 378 mm	322 mm / 378 mm	334 mm / 390 mm
MK / FK 32 DR	thread / flange	332 mm / 394 mm	373 mm / 435 mm	373 mm / 435 mm	373 mm / 435 mm	373 mm / 435 mm
MK / FK 40 DR	thread / flange	332 mm / 394 mm	373 mm / 435 mm	373 mm / 435 mm	373 mm / 435 mm	373 mm / 435 mm
MK / FK 50 DR	thread / flange	453 mm / 553 mm	453 mm / 553 mm	453 mm / 553 mm	453 mm / 553 mm	453 mm / 553 mm
FK 65 DR	flange	586 mm	586 mm	586 mm	-	-
FK 80 DR	flange	633 mm	633 mm	633 mm	-	-