

2/2-way valve

direct actuated

orifice

DN 2 - 50

pressure range

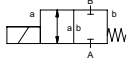
PN 0 - 100 bar

ports

threaded / flanged

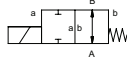
function NC

valve normally closed

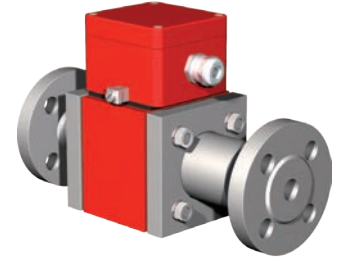
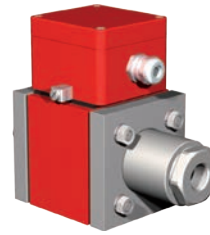


function NO

valve normally open



**ATEX** 



## specifications

ex-protective classes	II 2 G Eex me II T4 and II 2 D IP 65 T 130°C PTB 02 ATEX 2120 x
design	pressure balanced, with spring return
function	NC - normally closed NO - normally open (only MK/FK)
body materials	brass, galvanized steel, nickel plated brass, nickel plated steel, without non-ferrous metals, stainless steel
seal materials	NBR, PTFE, FPM, CR, EPDM, special materials
media	gaseous, liquid, highly viscous, contaminated
actuation	DC direct-current magnet AC direct-current magnet, with integrated / separate rectifier
nominal voltage	DC 24 V / AC 230 V
electrical connection	M16x1,5 terminal box
insulation class	H - 180 °C
enclosure protection	IP 65
energized duty rating	ED 100 %
flow direction	A ⇒ B B ⇒ A (Δp 16 bar max.)
vacuum	leak rate < 10 <sup>-6</sup> mbar•l•s <sup>-1</sup>
options / accessories	special threads, special flanges, function NO, damping, limit switches (NAMUR), manual override, approvals, special voltage



certified

## technical data

co-ax type	orifice [mm]	ports threaded	ports flanged	pressure range [bar]	Kv value A ⇒ B	media temperature	ambient temperature	switching time [ms] opening / closing
KB 15 Ex	DN 2	G 3/8	-	0 - 100	1,7 l/min	-20 °C ... +40 °C	-20 °C ... +40 °C	100 / 175
KB 15 Ex	DN 3	G 3/8	-	0 - 50	4,1 l/min	-20 °C ... +40 °C	-20 °C ... +40 °C	100 / 175
KB 15 Ex	DN 4	G 3/8	-	0 - 30	11,0 l/min	-20 °C ... +40 °C	-20 °C ... +40 °C	100 / 175
KB 15 Ex	DN 5	G 3/8	-	0 - 16	13,5 l/min	-20 °C ... +40 °C	-20 °C ... +40 °C	100 / 175
KB 15 Ex	DN 6	G 3/8	-	0 - 10	17,4 l/min	-20 °C ... +40 °C	-20 °C ... +40 °C	100 / 175
KB 15 Ex	DN 8	G 3/8	-	0 - 10	24,0 l/min	-20 °C ... +40 °C	-20 °C ... +40 °C	100 / 175
MK 10 Ex	DN 10	G 1/4 - G 3/4	-	0 - 16	2,5 m³/h	-20 °C ... +40 °C	-20 °C ... +40 °C	80 / 140
MK / FK 15 Ex	DN 15	G 3/8 - G 3/4	PN 16 / 40 / 100	0 - 16 / 40 / 64 / 100	4,8 m³/h	-20 °C ... +40 °C	-20 °C ... +40 °C	80 / 80
MK / FK 20 Ex	DN 20	G 3/4 - G 1 1/4	PN 16 / 40 / 100	0 - 16 / 40 / 64 / 100	7,4 m³/h	-20 °C ... +40 °C	-20 °C ... +40 °C	110 / 110
MK / FK 25 Ex	DN 25	G 1 - G 1 1/2	PN 16 / 40 / 100	0 - 16 / 40 / 64 / 100	11,2 m³/h	-20 °C ... +70 °C	-20 °C ... +70 °C	130 / 130
MK / FK 32 Ex	DN 32	G 1 1/4 - G 1 1/2	PN 16 / 40 / 100	0 - 16 / 40 / 64	14,1 m³/h	-20 °C ... +40 °C	-20 °C ... +40 °C	440 / 250
MK / FK 40 Ex	DN 40	G 1 1/2 - G 2	PN 16 / 40 / 100	0 - 16 / 40 / 64	18,4 m³/h	-20 °C ... +40 °C	-20 °C ... +40 °C	520 / 150
MK / FK 50 Ex	DN 50	G 2	PN 16	0 - 16	28,2 m³/h	-20 °C ... +40 °C	-20 °C ... +40 °C	400 / 400

## length

co-ax type	ports	standard	1 limit switch inductive	2 limit switches inductive	1 limit switch mechanical	manual override
KB 15 Ex	thread	135 mm	-	-	-	-
MK 10 Ex	thread	159,5 mm	159,5 mm	159,5 mm	-	-
MK / FK 15 Ex	thread / flange	185 mm / 242 mm	234 mm / 291 mm	234 mm / 291 mm	-	224 mm / 281 mm
MK / FK 20 Ex	thread / flange	215 mm / 269 mm	259 mm / 313 mm	259 mm / 313 mm	-	259 mm / 313 mm
MK / FK 25 Ex	thread / flange	246 mm / 302 mm	299 mm / 355 mm	299 mm / 355 mm	-	299 mm / 355 mm
MK / FK 32 Ex	thread / flange	258 mm / 324 mm	299 mm / 365 mm	299 mm / 365 mm	-	299 mm / 365 mm
MK / FK 40 Ex	thread / flange	258 mm / 324 mm	299 mm / 365 mm	299 mm / 365 mm	-	299 mm / 365 mm
MK / FK 50 Ex	thread / flange	365 mm / 438 mm	365 mm / 438 mm	365 mm / 438 mm	-	365 mm / 438 mm